

AEGEAN EXPLORER M26 | UKIEL

Console Design	05
Service Bar Design	06
Furniture Design	07
Logo Design	08
Platform Design	09
Exterior Sunbed Design (M262)	10

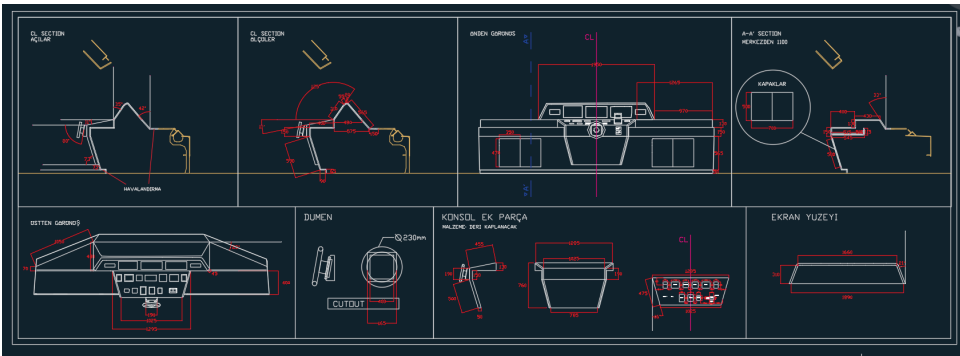
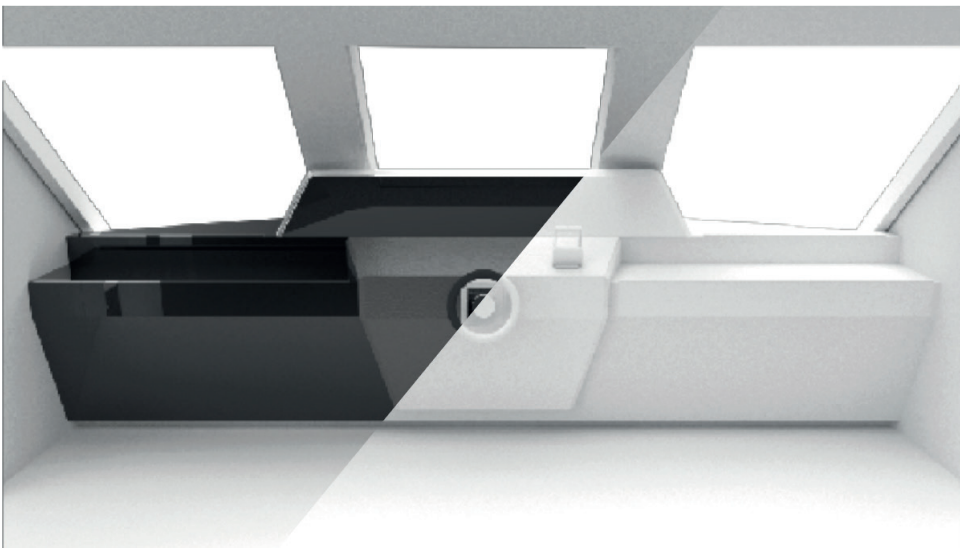
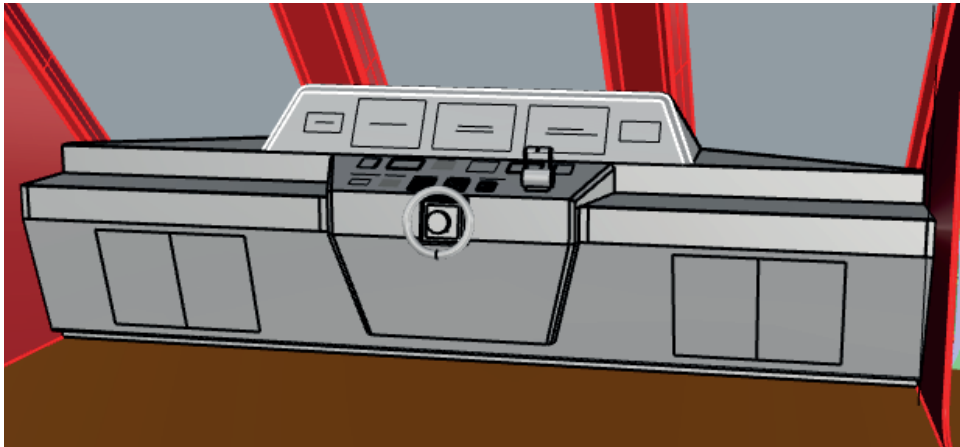




CONSOLE DESIGN

- 3D Modeling
- 2D Technical Drawing
- Rendering
- On-site Inspection

This console was designed with the captain's viewing angle, sitting comfort and ease of access to devices in mind. All angles on the console were calculated ergonomically.

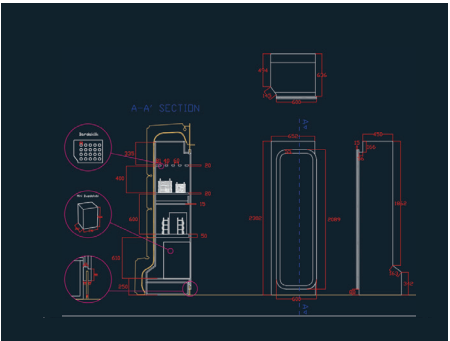
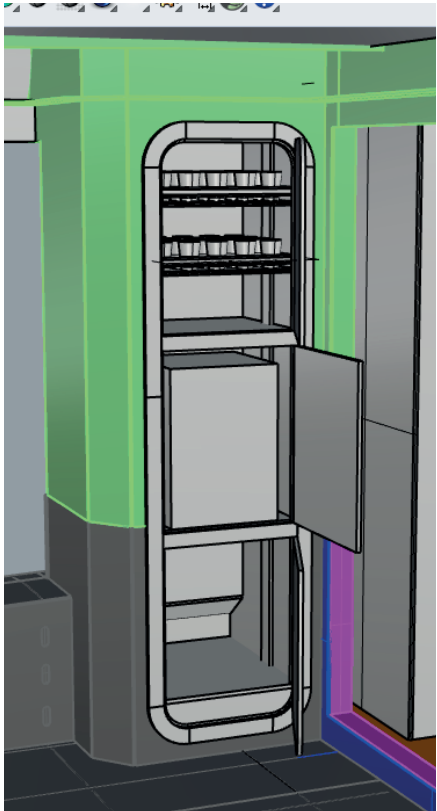




SERVICE BAR

- 3D Modeling
- 2D Technical Drawing
- Rendering
- On-site Inspection

This service bar is designed for the upper floor of the boat. Right across the mater cabin, there is a service that customers can reach quickly, without the need for other floors, where they create a 'special area' for themselves.





FURNITURE DESIGN

- 3D Modeling
- 2D Technical Drawing
- Rendering
- On-site Inspection

The interior servis bar is designed in the same design techique as the outside.The bar was partitioned so that the crockery would not be broken by shaking.

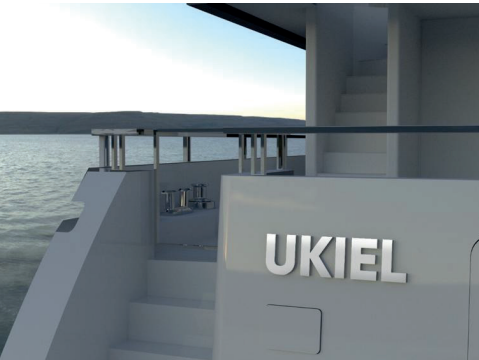




LOGO DESIGN

- 3D Modeling
- 2D Technical Drawing
- Rendering
- On-site Inspection

Illuminated chrome logos designed to be read comfortably on both sides of the boat.

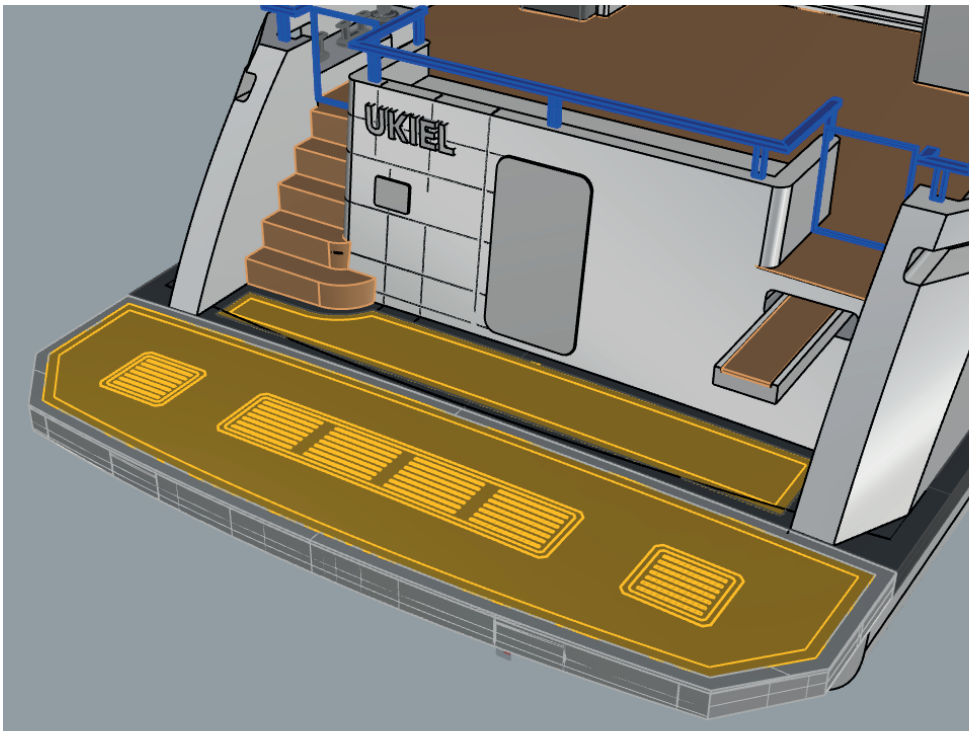
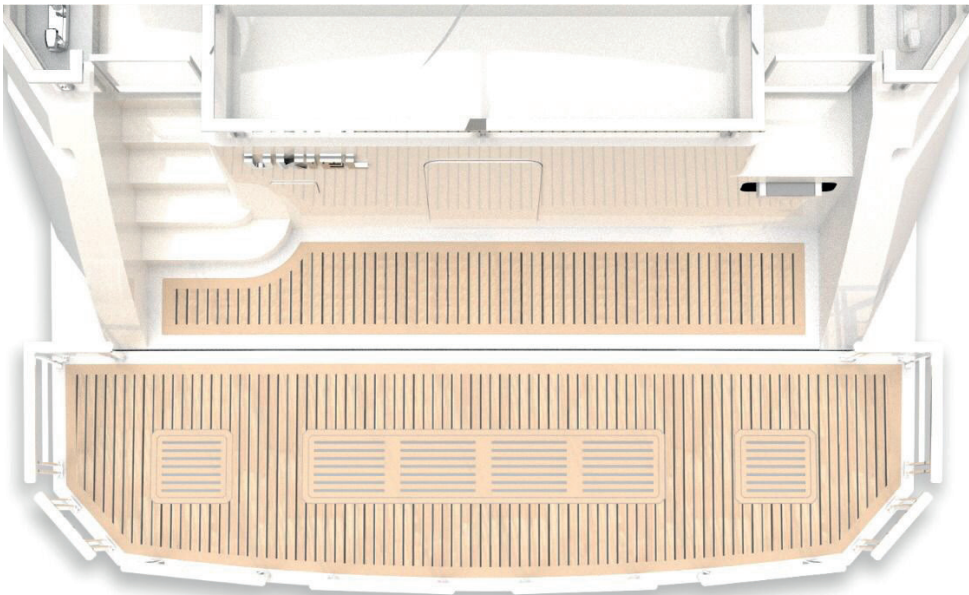




PLATFORM DESIGN

- 3D Modeling
- 2D Technical Drawing
- Rendering
- On-site Inspection

In the platform design, the grills were prepared in accordance with the construction. The slats and grill openings prepared according to the purchased boat are drawn in such a way that they do not overlap.

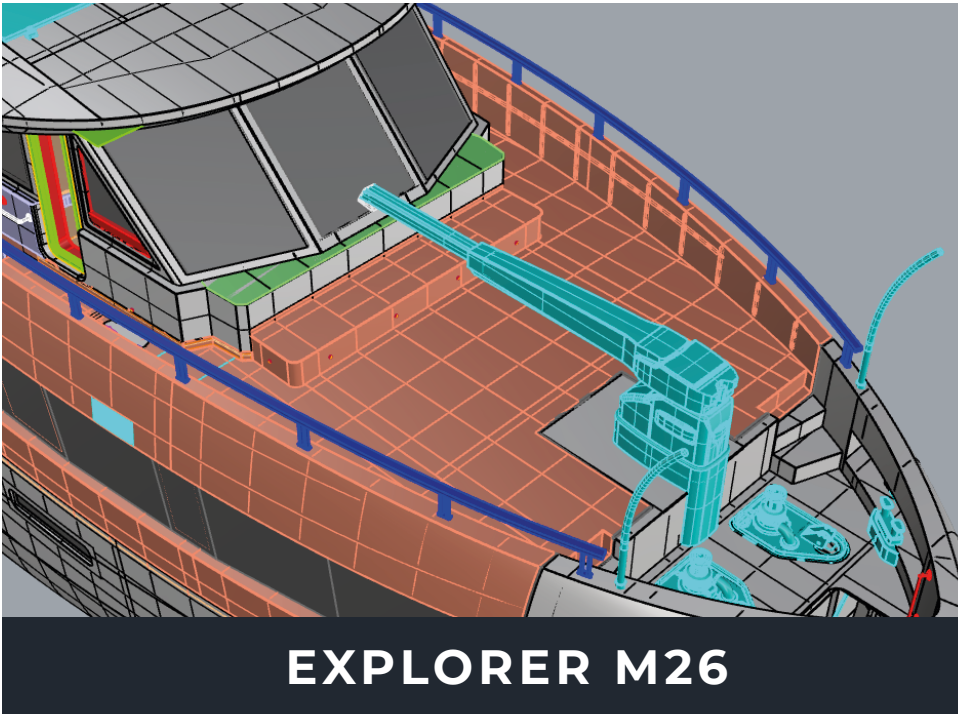
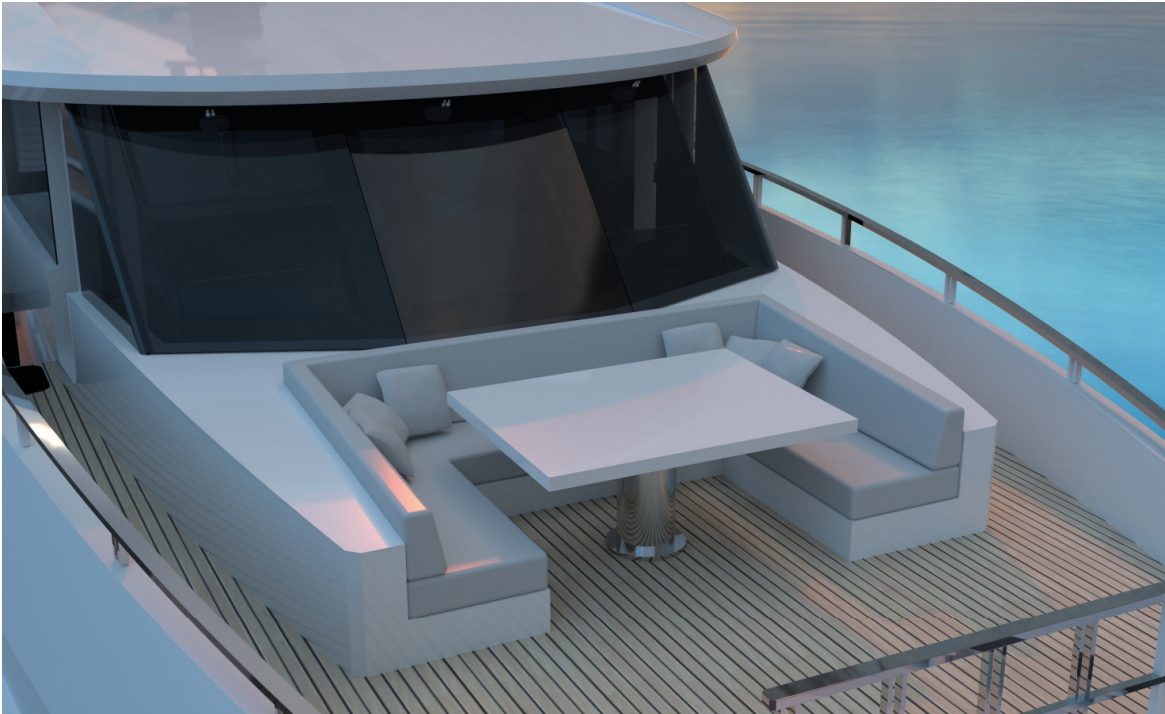




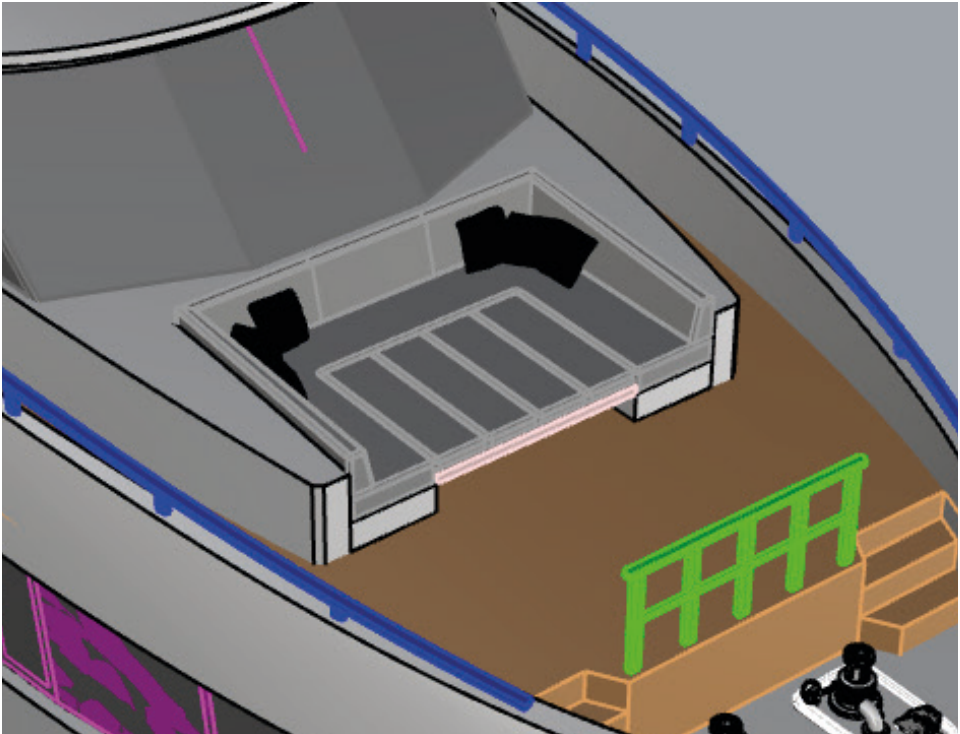
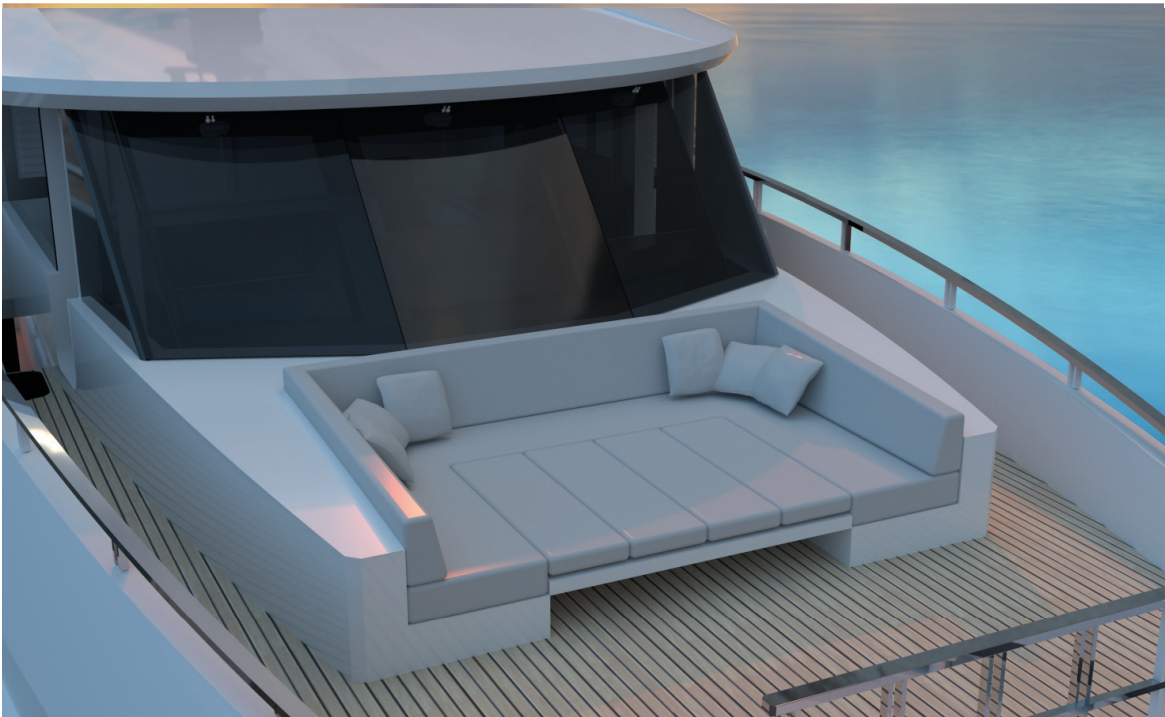
EXTERIOR SUNBED DESIGN (M262)

3D Modeling  
2D Technical Drawing  
Rendering

EXPLORER M26 will have a twin sister named M262. The upper deck sunbed design will be revised as in the drawings.



EXPLORER M26





39M SAILING

Interior Design	12-15
Exterior Design	16-17
Approval Project Drawings	18



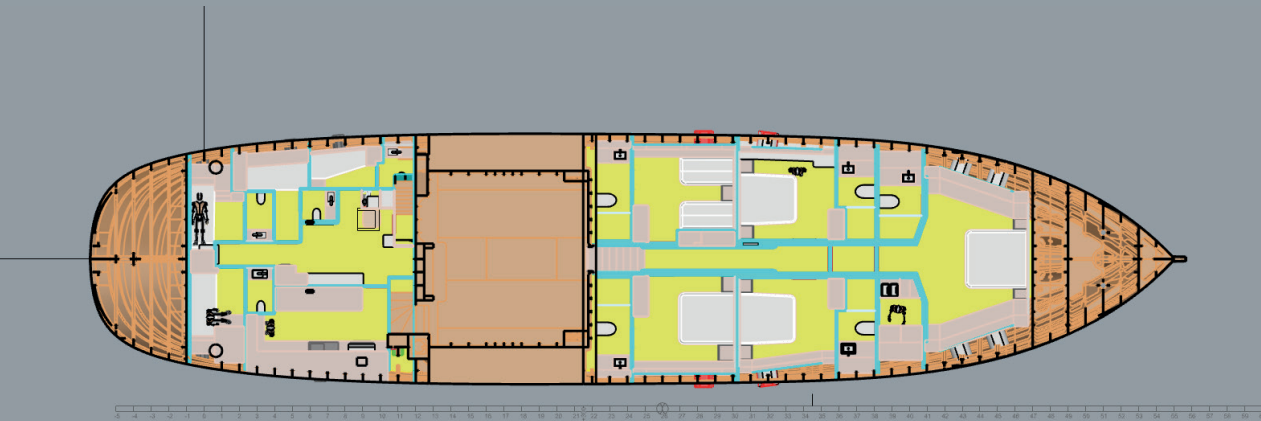
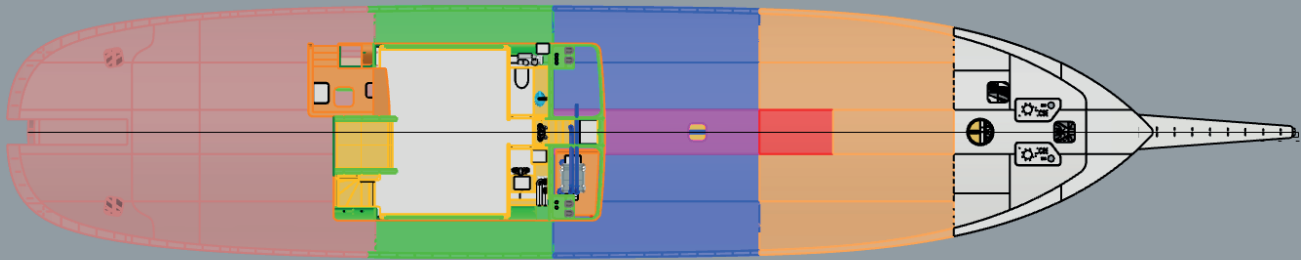
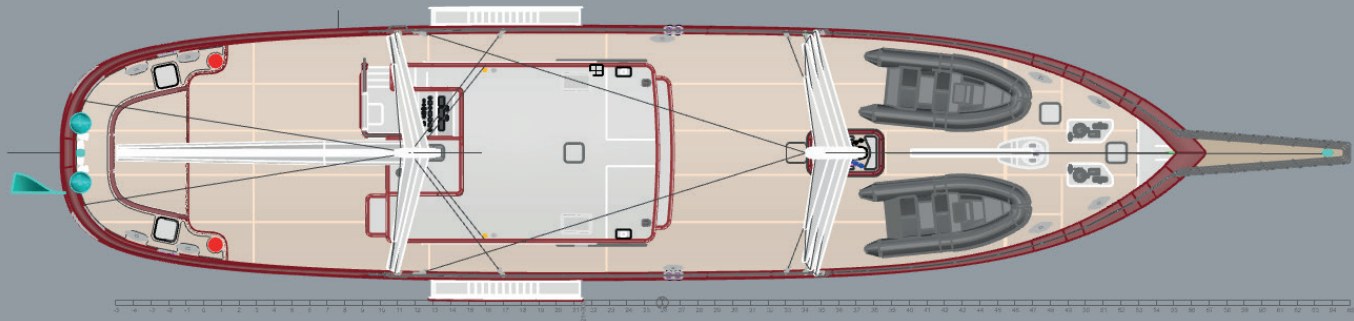


## INTERIOR DESIGN

- 3D Modeling
- 2D Technical Drawing
- Rendering
- On-site Inspection

in 39M Sailing, all cabins are 3d modeled in Rhino and rendered on Vray. Our aim was to fit as much cabin space as possible on the boat and to provide a comfortable space especially in the cabins of the customers.

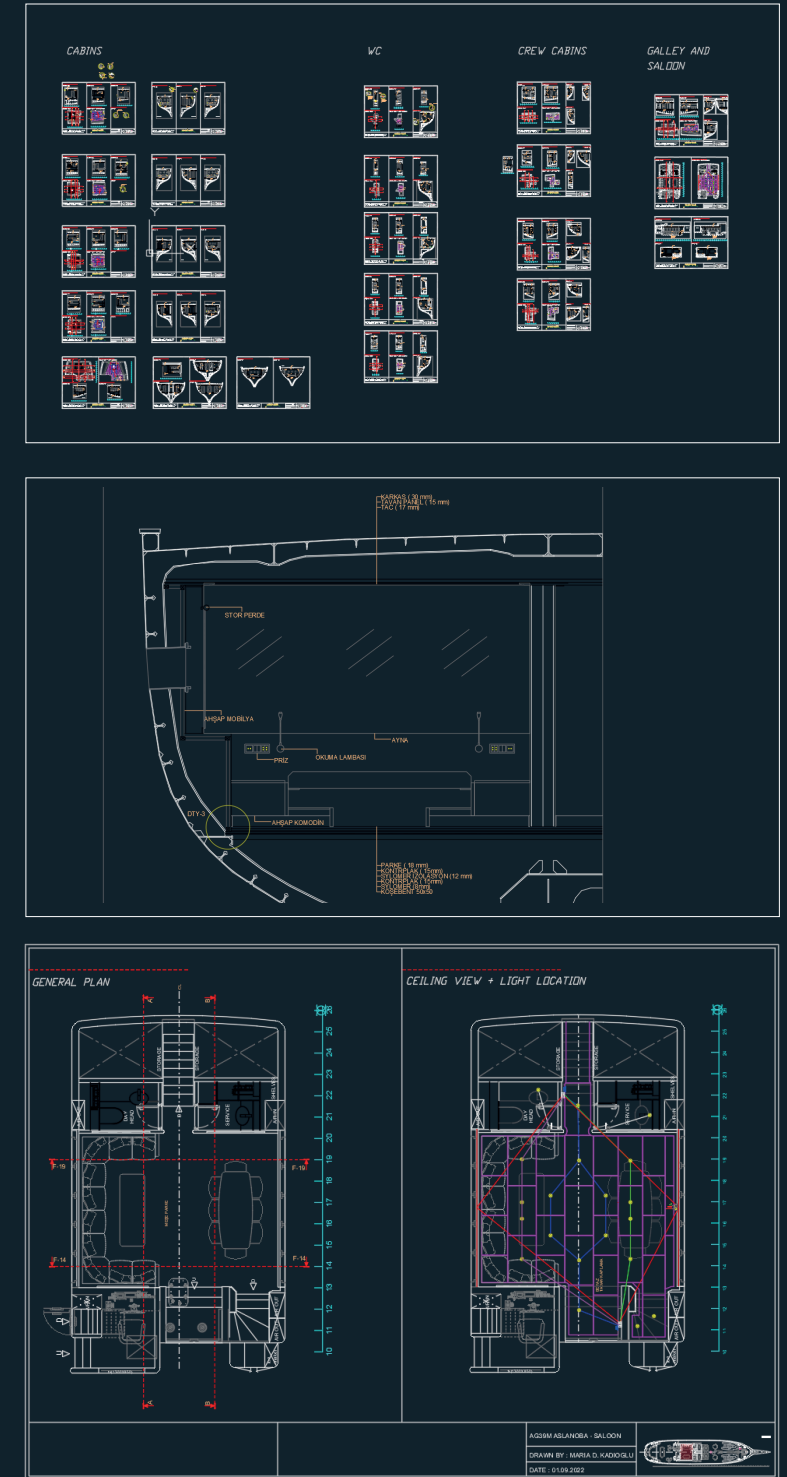
On the crew side, there is the kitchen, crew mess and rooms. It has double entrances as port and starboard. The kitchen has 3 refrigerators, oven, microwave, dishwasher and plenty of cupboard space.





- 3D Modeling
- 2D Technical Drawing
- Rendering
- On-site Inspection

02

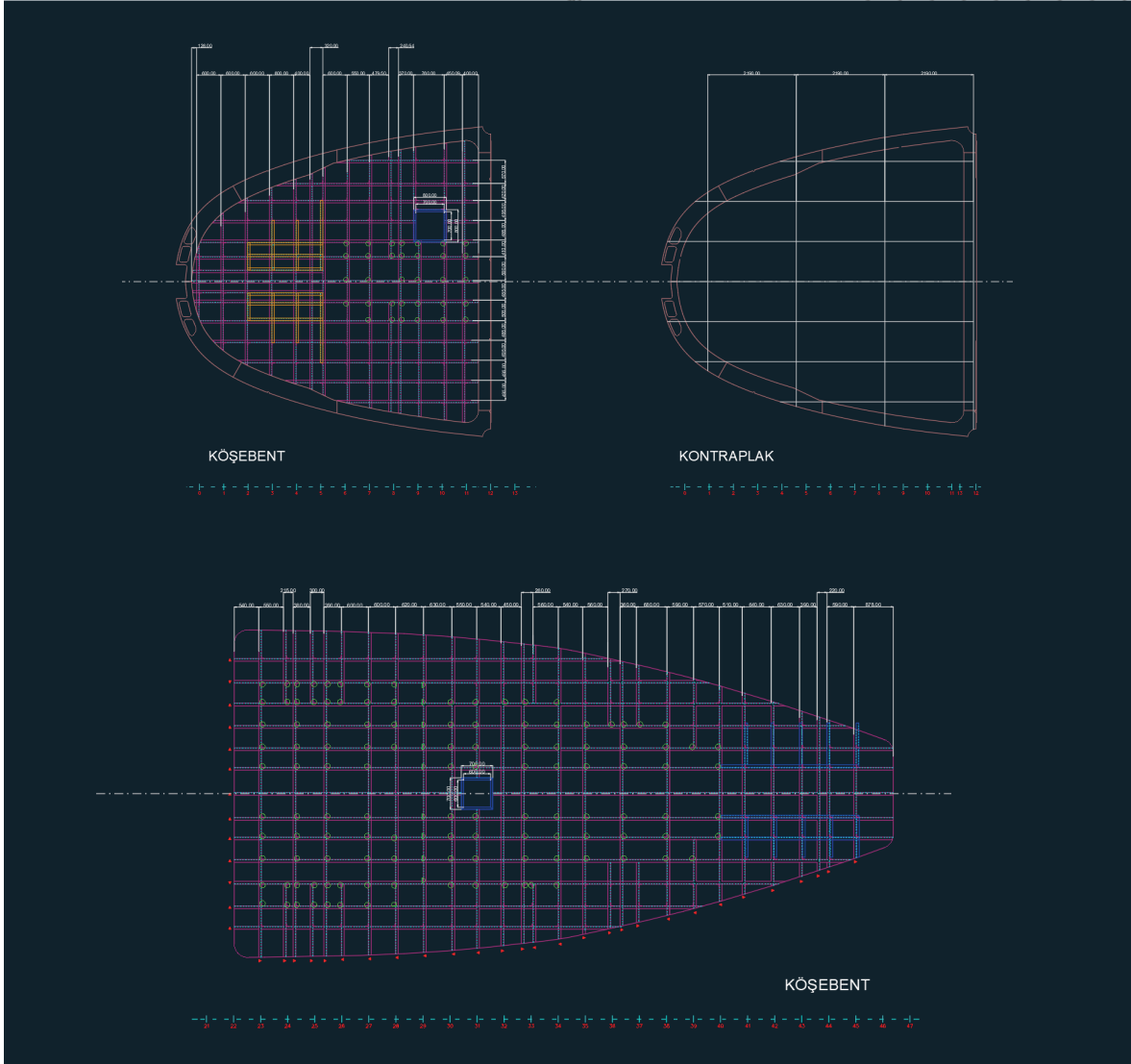
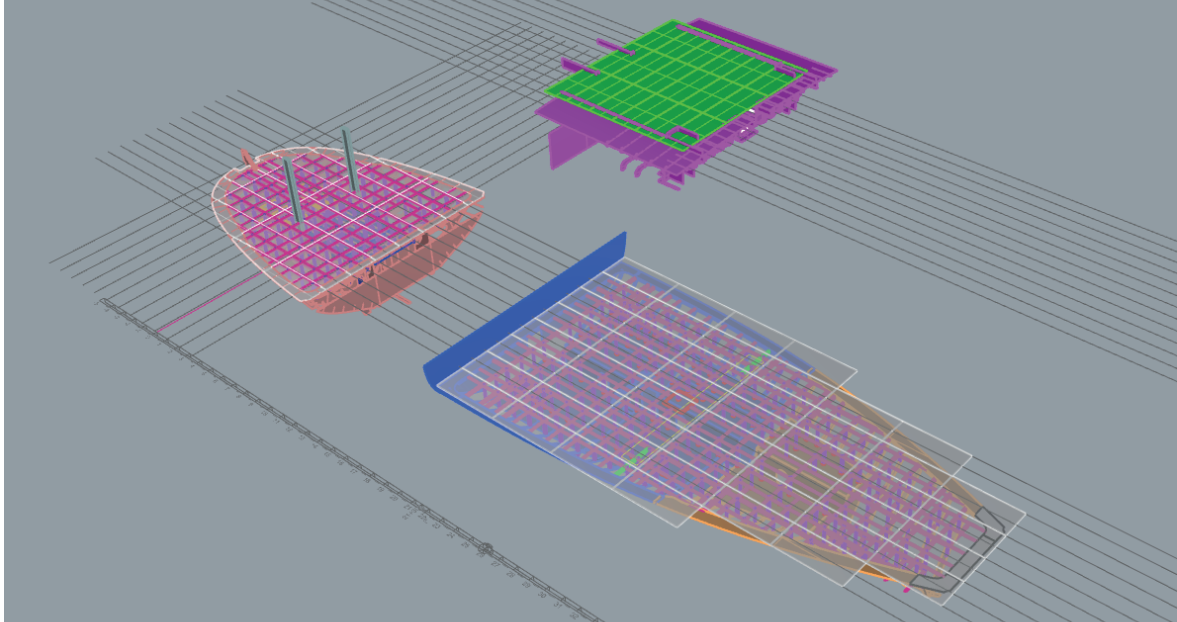




INTERIOR DESIGN

- 3D Modeling
- 2D Technical Drawing
- Rendering
- On-site Inspection

According to the wall partitions, floor material dimensions and construction, the bracket floor was drawn and welded according to the drawn plan.





INTERIOR CONSTRUCTION

- 3D Modeling
- 2D Technical Drawing
- Rendering
- On-site Inspection



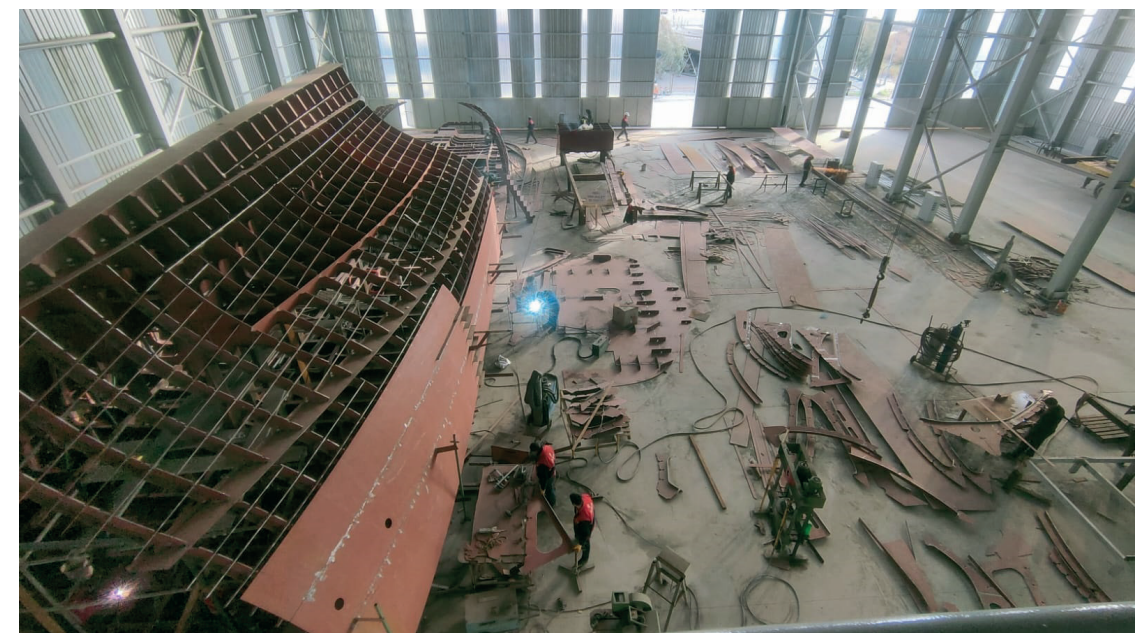
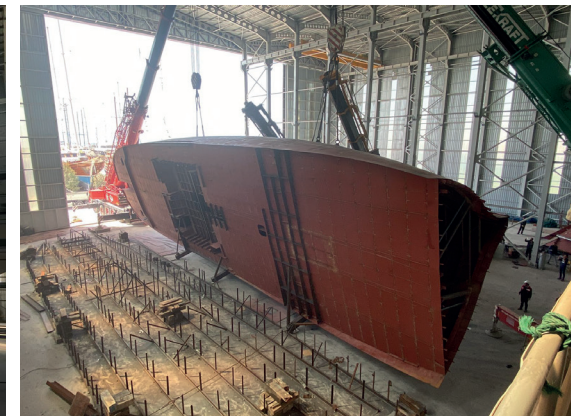
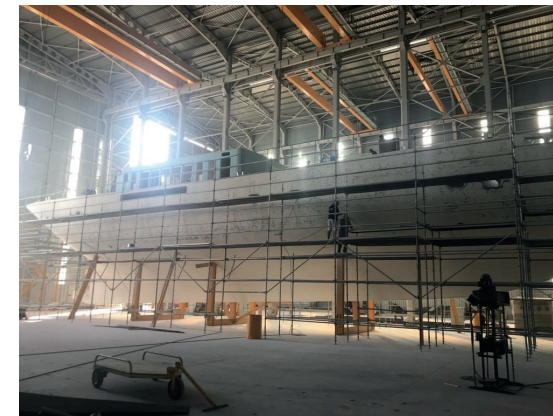
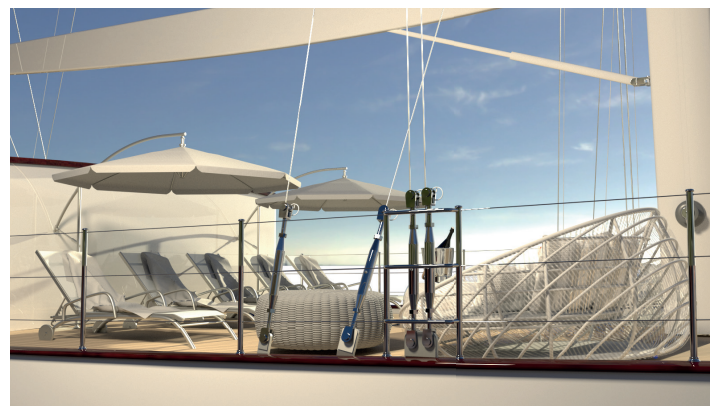
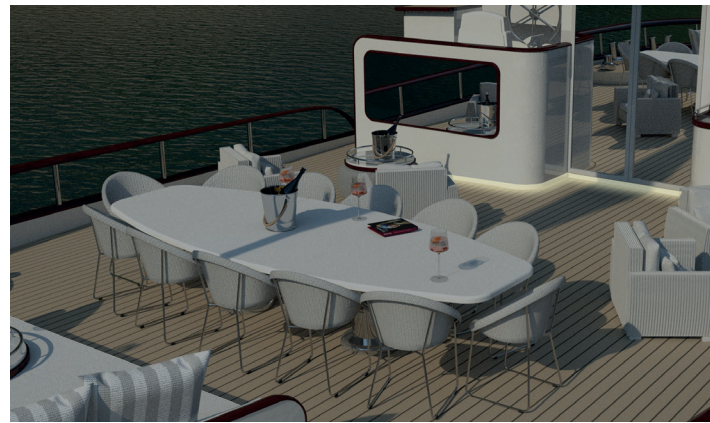
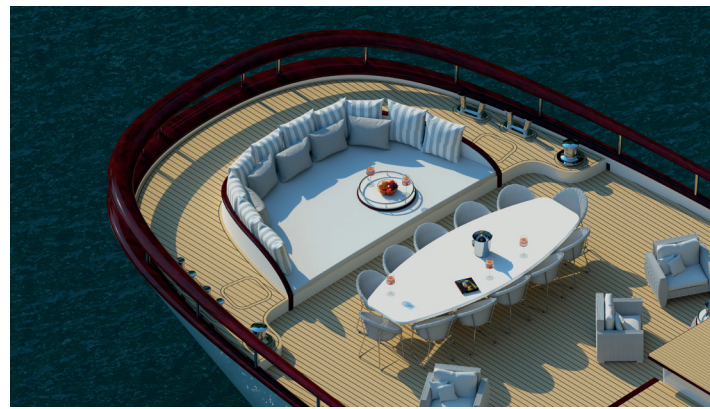


## EXTERIOR DESIGN

3D Modeling  
2D Technical Drawing  
Rendering  
On-site Inspection

The 39M was first built upside down, then the boat was turned down after the outer construction was completed.

All exterior surfaces were modeled in rhino and rendered. Chrome welding works, puttying and layout of cabins progressed simultaneously. Cabin rooms were moved from the mock up area and placed inside the boat step by step.

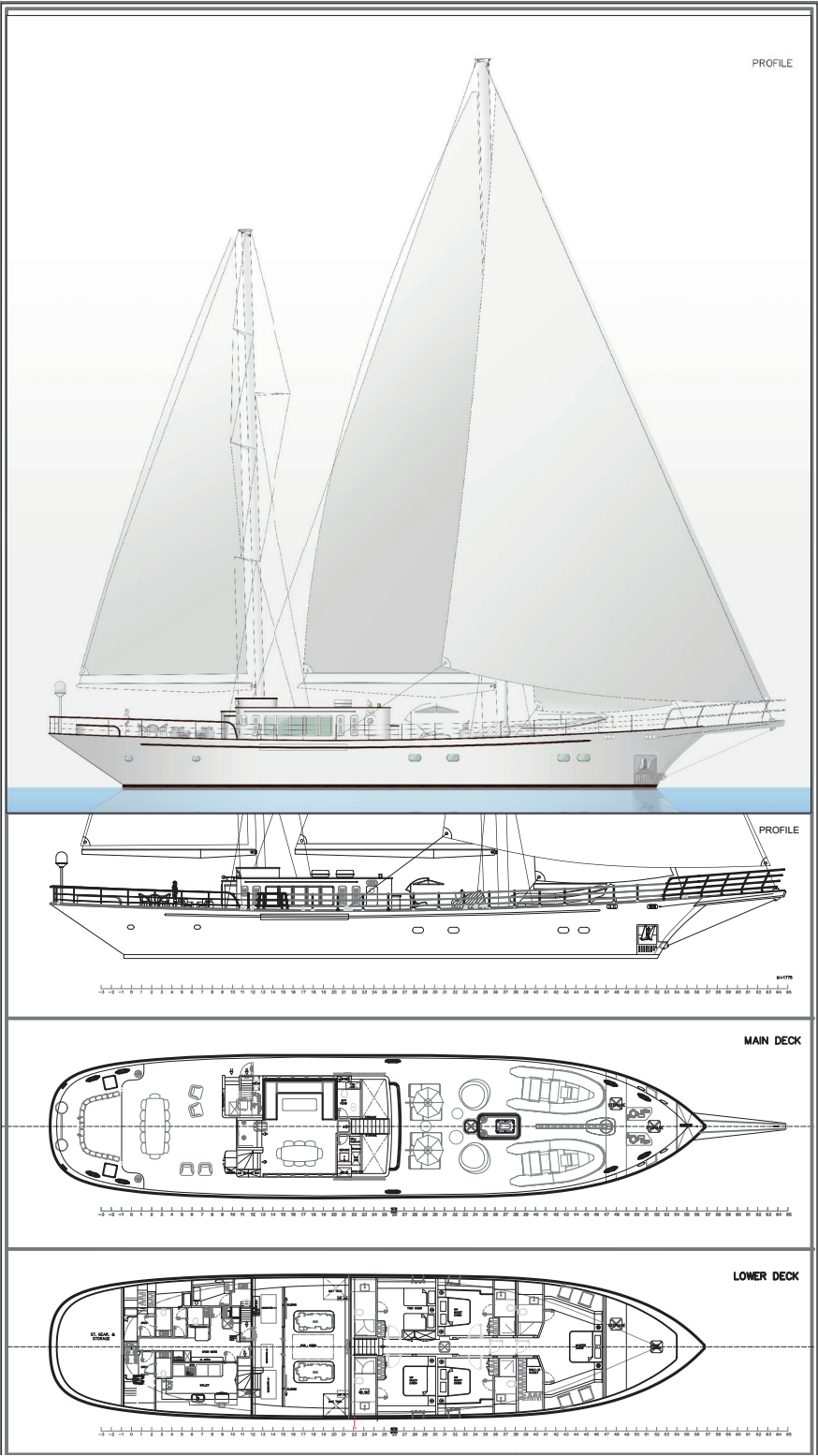




EXTERIOR DESIGN

- 3D Modeling
- 2D Technical Drawing
- Rendering
- On-site Inspection

02









FIND OUT MORE AT:

[www.mariakadioglu.design](http://www.mariakadioglu.design)